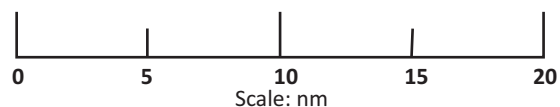


Class A		Distance	
Race 1	S SB F	84.7 nm	
Race 2	S MP SR F	84.6 nm	
Race 3	S WB F	79.5 nm	
Race 4	S GP AN SB F	150 nm	
Class B		Distance	
Race 1	S PV ER F	52.2 nm	
Race 2	S PV SR F	50.1 nm	
Race 3	S SMB F	41.8 nm	
Race 4	S GP AN SB F	150 nm	

- Mark Descriptions**
All marks rounded to port unless otherwise indicated
- S** Starting Area 3/4 nm SW of LA Light
 - PV** Bell Buoy R "10PV" 0.6 nm W of Palos Verdes Point
 - MP** "CG" Mooring Buoy NE of Malibu Point approx. 34° 02.1'N 118° 40.2'W
 - GP** Production Platform Gina 3.5 nm SW of Point Hueneme
 - AN** Anacapa Island
 - SB** Santa Barbara Island
 - ER** Eagle Rock 0.4 nm S of West End of Catalina Island
 - SR** Ship Rock approx. 1.2 nm N of Isthmus Cove
 - WB** 46025 yellow weather buoy Flashing Light 20 second sequence Note: Position may vary from chart location by as much as 500 yards or more as buoy is anchored in approx. 3000 feet of water
 - SMB** Weather buoy 46221 Santa Monica Bay Y "28" FL(5)Y20S 33° 51.3'N 118° 38.1'W
 - F** Finish between LA Light and inside edge of detached breakwater



6.19.2020



Not for navigational use