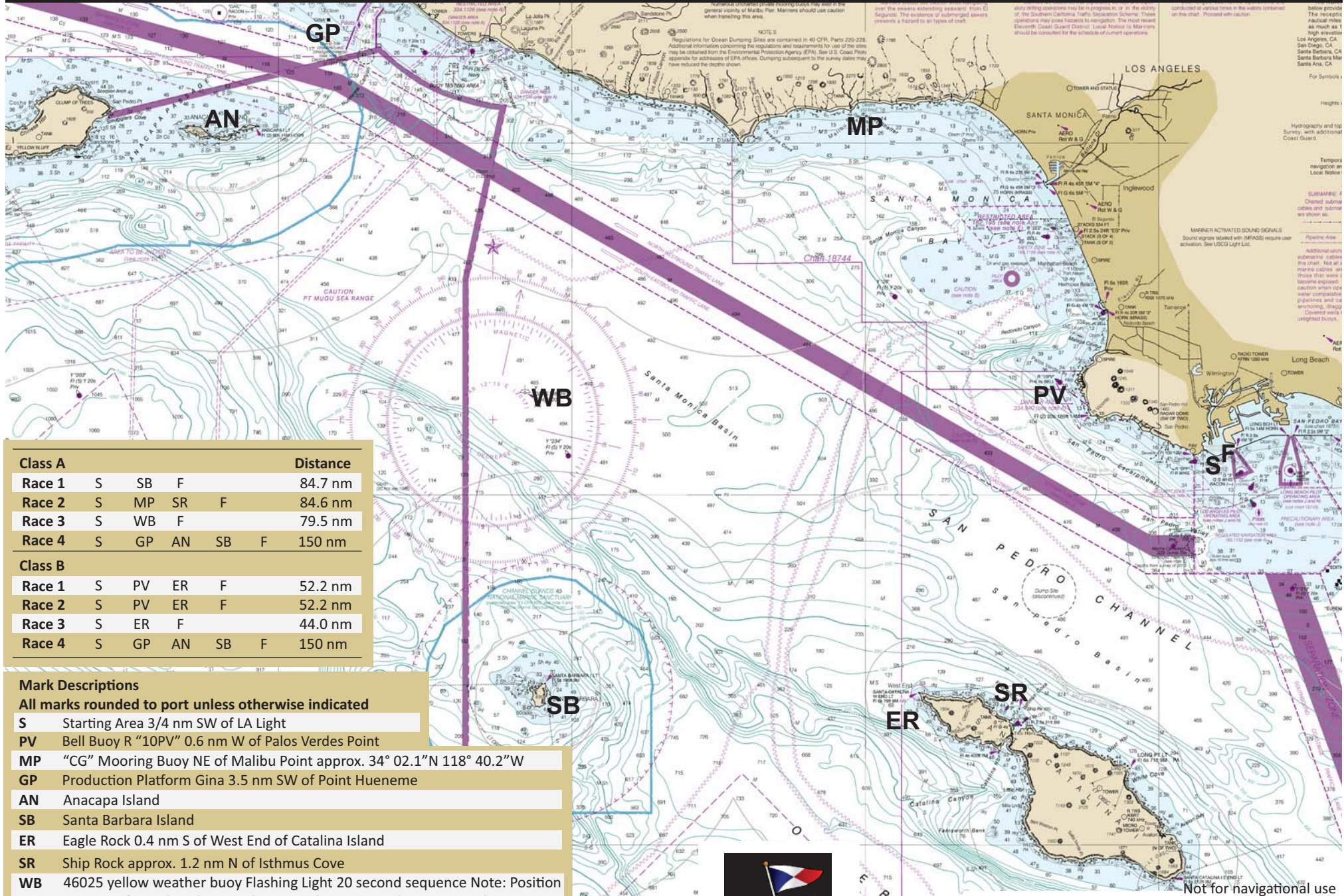




LOS ANGELES YACHT CLUB **BREAKOUT SERIES** COURSE CHART

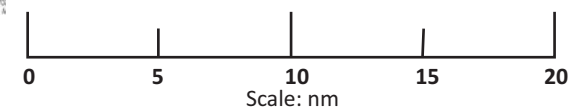


Class	Race	S	SB	F	Distance	
Class A	Race 1	S	SB	F	84.7 nm	
	Race 2	S	MP	SR	F	84.6 nm
	Race 3	S	WB	F	79.5 nm	
	Race 4	S	GP	AN	SB	F
Class B	Race 1	S	PV	ER	F	52.2 nm
	Race 2	S	PV	ER	F	52.2 nm
	Race 3	S	ER	F	44.0 nm	
	Race 4	S	GP	AN	SB	F

- Mark Descriptions**
All marks rounded to port unless otherwise indicated
- S** Starting Area 3/4 nm SW of LA Light
 - PV** Bell Buoy R "10PV" 0.6 nm W of Palos Verdes Point
 - MP** "CG" Mooring Buoy NE of Malibu Point approx. 34° 02.1"N 118° 40.2"W
 - GP** Production Platform Gina 3.5 nm SW of Point Hueneme
 - AN** Anacapa Island
 - SB** Santa Barbara Island
 - ER** Eagle Rock 0.4 nm S of West End of Catalina Island
 - SR** Ship Rock approx. 1.2 nm N of Isthmus Cove
 - WB** 46025 yellow weather buoy Flashing Light 20 second sequence Note: Position may vary from chart location by as much as 500 yards or more as buoy is anchored in approx. 3000 feet of water
 - F** Finish between LA Light and inside edge of detached breakwater



5.26.2020



Not for navigational use